

## 7'x5' Window Package with (2) 18" Sidelights

This window package fits the popular 7'w x 5'h rough opening featured on many architectural plans. This package provides extra light, architectural interest, and the flexibility to add an integrated heated or non-heated air curtain as dictated by the regional climate.

### Choose your Glazing

- ◇ **1/4" Clear Tempered** Value choice
- ◇ **3/4" Insulated Low E Tempered (Solarban 70XL)** Maximizes energy-efficiency and staff comfort. Estimated to save 33% on energy costs associated with the window. Provides additional security by featuring two panes of glazing vs one, and a security lip in the frame to help prevent forced entry.

### Choose your Mode of Operation

- ◇ **MANUAL OPEN / SELF CLOSE**  
Manual open, with patented hands-free gravity close. Economical and easy to maintain.
- ◇ **MANUAL OPEN / ELECTRONIC RELEASE (MOER)**  
Electromagnetic "hold open" feature paired with a presence sensor offers the control of manual open with a gravity-fed close that won't release while interacting with customers. Hands free interaction that is easy to maintain.
- ◇ **ELECTRIC**  
Fully automatic electric, for hands free open & close. Operator steps into an overhead beam to activate.



### SIZE

Window Frame Size: 47 1/2"W x 43 1/2"H

Service Opening: 19"W x 35" H

Overall Frame Size with 16" Transom and (2) 18" sidelights:

83.5" W x 59.5" H

Rough Opening: 84" W x 60" H (7'x 5')

### STANDARD FEATURES:

- ◇ Anodized aluminum extrusions and stainless steel combine to give you an attractive window that will not rust, pit or weather
- ◇ Fully assembled, pre-glazed and ready to install
- ◇ 1/4" Clear Tempered Glass or Solarban 70XL Insulated Low E
- ◇ Dark Bronze or Clear Anodized Aluminum
- ◇ Self latches every time it closes. Also includes a thumb turn lock, and night locking bar
- ◇ Track free bottom sill provides for a contaminant free surface. Angled toward outside for drainage toward exterior.
- ◇ One year parts & labor limited warranty
- ◇ On-staff tech support / stocked parts / nationwide network of service providers.

### OPTIONAL FEATURES

- ◇ Powder Coat Paint—Tiger Drylac
- ◇ Custom Size Window, Transom, or Sidelight(s)
- ◇ Tinted Glazing
- ◇ Low E Glass
- ◇ 5/16 Safety Glass
- ◇ Stainless Steel Shelf to extend sill inside or out (13 ga.)
- ◇ Telescoping Night Time Security Bar Set for additional security
- ◇ AA300 Heated Air Curtain (replaces transom)
- ◇ Transom for AA100 Fly Fan (includes AA100 / Relay Switch)
- ◇ Transom for AA100 Fly Fan with West Coast Restricted Opening (includes AA100 / Relay Switch)
- ◇ Inside Mount Air Curtain (heated or unheated) with optional relay switch



## 7'x5' Window Package with (2) 18" Sidelights



All windows are shipped completely  
pre-assembled, fully glazed and  
ready to install.

Installation / Owners manual can be retrieved online:  
[www.ready-access.com](http://www.ready-access.com)

- ◇ Installation illustrations are for reference only.  
Construction conditions and local codes prevail.
- ◇ Must be installed level, square and plumb.
- ◇ Recommend approximately 36" from top of sill to  
interior finished floor (or per local code).
- ◇ 84"W x 60" H rough opening recommended for  
leveling. Sidelights ship loose to attach in field.

### SERVICE OPENING

Specify L/R or R/L from outside view

### DEPTH

4" deep if 1/4" clear tempered glazing is selected

4.5" deep if 3/4" Solarban 70XL glazing is selected

### ELECTRIC REQUIREMENTS FOR WINDOW

Run power to header on fixed panel side.

**Manual Open / Electronic Release and Fully Automatic Electric:**  
115 vac—60Hz with a 15 amp dedicated circuit

**Optional Air Curtain requires separate dedicated circuit**

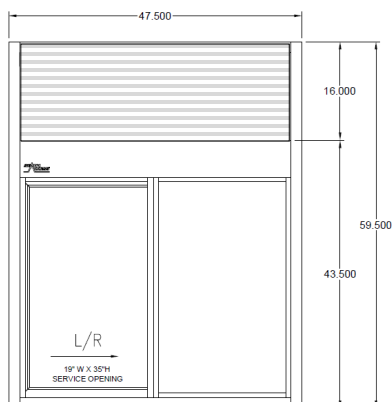
**Manual Open / Self Close Window:**  
No Power Required

### VARIATIONS WITH AIR CURTAINS

#### COLD CLIMATES

AA300 HEATED AIR CURTAIN

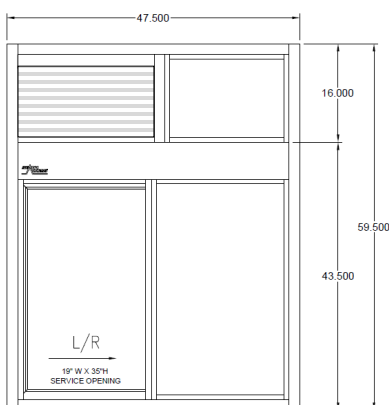
ILO TRANSOM



#### WARM CLIMATES

TRANSOM FOR AA100 FLY FAN

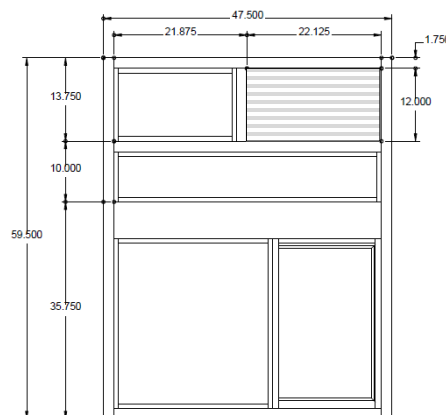
STANDARD SERVICE OPENING



#### WEST COAST

RESTRICTED SERVICE OPENING

TRANSOM FOR AA100 FLY FAN



1815 Arthur Drive West Chicago, IL 60185 800.621.5045 630-876-7766 (fax) 630.876.7767

[www.ready-access.com](http://www.ready-access.com)

email: [ready@ready-access.com](mailto:ready@ready-access.com)